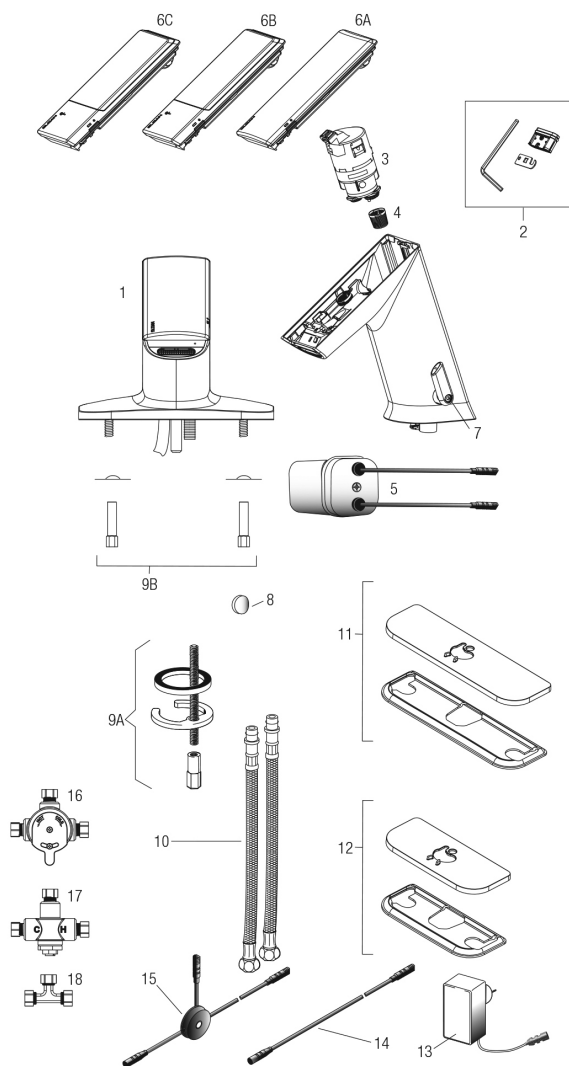


## Sloan

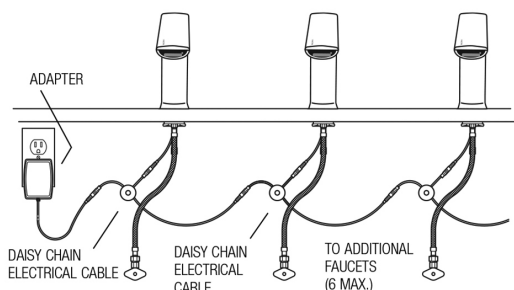
### Sloan Basys EFX-300 Series



EFX-3XX SERIES



Electrical Connection for up to Six (6) Faucets Using One (1) Adapter



1	99860024	Hardwired, Chrome BASYS Faucet Low-HW-Bowed-0.5
2	99651049	0.5 GPM Multi-Lam Spray Head
	99860025	1.5 GPM Aerated Stream Insert
	99860026	1.5 GPM Laminar Stream Insert
3	99523850	0.5 GPM Solenoid Valve Caddy Assembly Low (Green)
	99524098	1.5 GPM Solenoid Valve Caddy Assembly Low (Blue)
4	99811302	Strainer (Filter) (PK/10)
5	99122677	Battery Pack Assembly
6A	99811303	Crown Assembly
6B	99590498	Solar Crown Assembly
6C	99811304	Solar Crown w/ LCD Assembly
8	99710252	Handle Cap (EFX IR models only)
9A	99330459	Faucet Mounting Kit (pedestal model only)
9B	99811313	Faucet Mounting Kit (integrated base model only)
10	99271632	13" Flexible Supply Hose
11	99452772	Trim Plate for 8" Centerset Sink (CP)
12	99700041	Trim Plate for 4" Centerset Sink
13	99330475	Plug-In Adapter
	88093279	Box Mount 6 VDC Optima i.q® Faucet
14	88093276	11-13/16" Extension Cable
	88093277	47-1/4" Extension Cable
	99289405	10ft Extension Cable
15	99317485	Power Splitter
16	99013370	Mechanical Below Deck Mixing Valve
17	99042986	Thermostatic Below Deck Mixing Valve
18	99082170	Back-Check Tee Assembly

#### TROUBLESHOOTING GUIDE

##### 1. Red LED in spout does not blink 2 seconds after battery installation.

- A. Battery placement incorrect or batteries have been discharged.
- B. Ensure batteries are installed properly. Check the orientation of each battery matches the positive (+) and negative (-) symbols shown on the battery compartment.

##### 2. Faucet DOES NOT deliver any water when sensor is activated.

INDICATOR: Solenoid valve produces an audible "CLICK".

- A. Water supply stop(s) closed.  
Open water supply stop(s).
- B. Strainer is clogged.  
Remove, clean, and reinstall strainer. Replace strainer, if needed (refer to page 131).

##### 3. Solenoid valve DOES NOT produce an audible "CLICK".

- A. Batteries low (battery powered models).  
Replace batteries (refer to battery replacement on page 130).
- B. Power failure (hardwire models). Check power supply.

##### 4. LED indicator blinks RED when faucet is in use.

- A. Batteries low (battery powered models).
- B. Replace batteries (refer to battery replacement on page 132).